

Why balance is important amid equity market volatility



From the Field
July 2024

Key Insights

- A more challenging period seems likely for equity markets. Geopolitics, sticky inflation, and potentially peaking earnings growth are likely to generate some volatility.
- A small cohort of companies have dominated market performance this year, but the period ahead may be more complex and near-term earnings will likely drive sentiment.
- A more balanced portfolio with exposure to the best secular themes, coupled with areas that offer more defensive characteristics, will be important.

Equity markets have performed well this year, but returns have been concentrated in a narrow subset of the market, namely artificial intelligence (AI) and artificial incretins (GLP-1s). However, we are entering a key earnings season in which many of the significant outperformers year-to-date may begin to see a slowing rate of returns improvement. In our experience, fundamental momentum tends to matter more in the short term for relative performance and valuation, and therefore the margin for error is smaller.

Two seismic developments: balancing exposure to artificial intelligence and artificial incretins (AI₂)

Corporate earnings for many large technology and health care companies have been strong over the past 18 months. However, in terms of the AI infrastructure buildout, we believe we are clearly past the early phase of adoption and most meaningful inflection in spending. It is wise at this point to question whether the current pace of capital expenditure growth can be sustained at these levels. The risk of an unexpected surprise in terms of earnings guidance could prompt a rotation out of AI names. That needs to be managed in a strategic manner, especially from a factor risk perspective.



David Eiswert
*Portfolio Manager,
Global Stock Fund*



Nabil Hanano
*Associate Portfolio
Manager, Global Stock Fund*

“ The risk of an unexpected surprise...could prompt a rotation out of AI names.

— David Eiswert
Portfolio Manager, Global Stock Fund

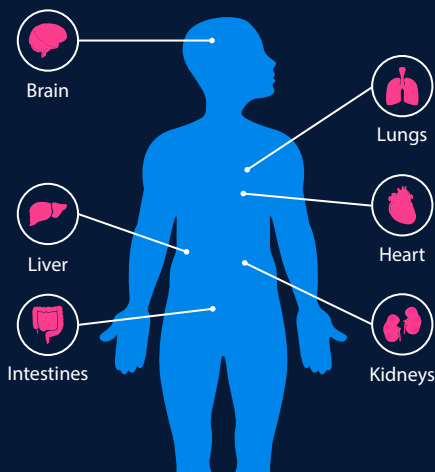
GLP-1 impacts beyond diabetes and obesity

While GLP-1 receptors are concentrated in the pancreas, they are spread throughout the body—and evidence is growing that GLP-1 drugs can interact directly with GLP-1 receptors found in other organs.

May reduce alcohol cravings, and early evidence suggests a possible role in avoiding neurodegenerative diseases such as Alzheimer's and Parkinson's.

May reduce fat buildup in those with fatty liver disease.

May speed the breakdown of fat cells to produce energy.



May reduce inflammation in the lungs and other organs, although it's unclear how much of this is due to weight loss.

May reduce inflammation in the heart and circulatory system.

May preserve kidney function in those with chronic kidney disease.

We have for some time treated our exposure to the so-called Magnificent Seven (Apple, Microsoft, Alphabet, Amazon, NVIDIA, Meta Platforms, and Tesla) as a separately defined sector. That allows more potential to govern the impact on portfolio returns versus the benchmark, particularly given the unusually high concentration of these stocks in market indices. The bar is now set extremely high for these companies in terms of earnings delivery—a risk that warrants due consideration.¹

While the initial infrastructure cycle for AI may be peaking, we are, however, only just beginning to see the potential benefits of AI in other areas. In the next few years, we expect to see an acceleration in terms of speed, productivity, and innovation as companies employ their AI capabilities. The potential is not limited to technology—it traverses nearly every sector and industry, some that may not be immediately obvious. Energy, industrials, and even real estate are all potential beneficiaries of the AI cycle.

The other seismic shift of recent years has been health care innovation, specifically

the development of GLP-1s. We feel much more optimistic about the potential of this area in the near term. The benefits of these drugs keep expanding (see graphic). GLP-1s have been lauded, including claims that obesity could potentially be cured in the next 10 years. This has significant repercussions. The ability of the drugs to regulate body weight at a relatively low cost has huge potential benefits for both society and economies.

An oral version of GLP-1s is being developed and is likely to be available sooner rather than later. This would potentially see much greater adoption, and with it improved earnings for their manufacturers. Growth forecasts, however, will depend on constraints around capacity and the ability to deliver as demand increases.

Importance of building a balanced portfolio

Rising valuations and a stretched investment cycle demand consideration of the potential for market rotation. Building a portfolio that invests in technology and

“ While the infrastructure cycle for AI may be peaking, we are, however, only just beginning to see the potential benefits of AI in other areas.

– Nabil Hanano
Associate Portfolio Manager,
Global Stock Fund

¹ MAG 7 weightings in the Global Stock Fund as at June 30, 2024: Apple Inc. 5.93%, Microsoft 3.72%, Alphabet 1.44%, Amazon.com 3.38%, NVIDIA Inc. 5.37%, Meta Platforms 1.96%, Tesla 1.01%.

health care is important given the seismic shifts underway. But exposure here must be balanced with other areas such as energy, financials, industrials, and even consumer staples. These sectors have historically offered defensive qualities and steady growth that could potentially provide a buffer against market volatility.

The wider macroeconomic backdrop is also a key consideration. As we have conveyed previously, we believe we are in the early stages of an equilibrium shift. One where the economy has veered from abundance to scarcity. This will likely see inflation remain stickier and interest rates higher for longer. Geopolitical risks

play into this dynamic. A more dangerous world means a higher risk premium put on natural resources and a greater importance on supply chain independence. The U.S. presidential election cycle adds another level of complexity with different policy implications.

This mosaic of changes means that the playing field for investing is changing. Yet, this is where active management can take control. If the game has changed, it's important to change your strategy. But we believe this new equilibrium path offers new and broader opportunities, alongside a potential to build a better risk profile.

 **...we believe this new equilibrium path offers new and broader opportunities, alongside a potential to build a better risk profile.**

– David Eiswert
Portfolio Manager, Global Stock Fund

INVEST WITH CONFIDENCE®

T. Rowe Price identifies and actively invests in opportunities to help people thrive in an evolving world, bringing our dynamic perspective and meaningful partnership to clients so they can feel more confident.

The specific securities identified and described are for informational purposes only and do not represent recommendations. No assumptions should be made that investments in the securities identified and discussed were or will be profitable.

Risks: International investments can be riskier than U.S. investments due to the adverse effects of currency exchange rates, differences in market structure and liquidity, as well as specific country, regional, and economic developments. Investing in **technology** stocks entails specific risks, including the potential for wide variations in performance and usually wide price swings, up and down. **Health sciences** firms are often dependent on government funding and regulation and are vulnerable to product liability lawsuits and competition from low-cost generic product. Because of the cyclical nature of **natural resource** companies, their stock prices and rates of earnings growth may follow an irregular path. **Real estate** is affected by general economic conditions. When growth is slowing, demand for property decreases and prices may decline. **Financial services** companies may be hurt when interest rates rise sharply and may be vulnerable to rapidly rising inflation.

Important Information

Call 1-800-225-5132 to request a prospectus or summary prospectus; each includes investment objectives, risks, fees, expenses, and other information you should read and consider carefully before investing.

This material is provided for informational purposes only and is not intended to be investment advice or a recommendation to take any particular investment action.

The views contained herein are those of the authors as of July 2024 and are subject to change without notice; these views may differ from those of other T. Rowe Price associates.

This information is not intended to reflect a current or past recommendation concerning investments, investment strategies, or account types, advice of any kind, or a solicitation of an offer to buy or sell any securities or investment services. The opinions and commentary provided do not take into account the investment objectives or financial situation of any particular investor or class of investor. Please consider your own circumstances before making an investment decision.

Information contained herein is based upon sources we consider to be reliable; we do not, however, guarantee its accuracy.

Past performance is not a reliable indicator of future performance. All investments are subject to market risk, including the possible loss of principal. All charts and tables are shown for illustrative purposes only.

T. Rowe Price Investment Services, Inc.

© 2024 T. Rowe Price. All Rights Reserved. T. ROWE PRICE, INVEST WITH CONFIDENCE, and the Bighorn Sheep design are, collectively and/or apart, trademarks of T. Rowe Price Group, Inc.